



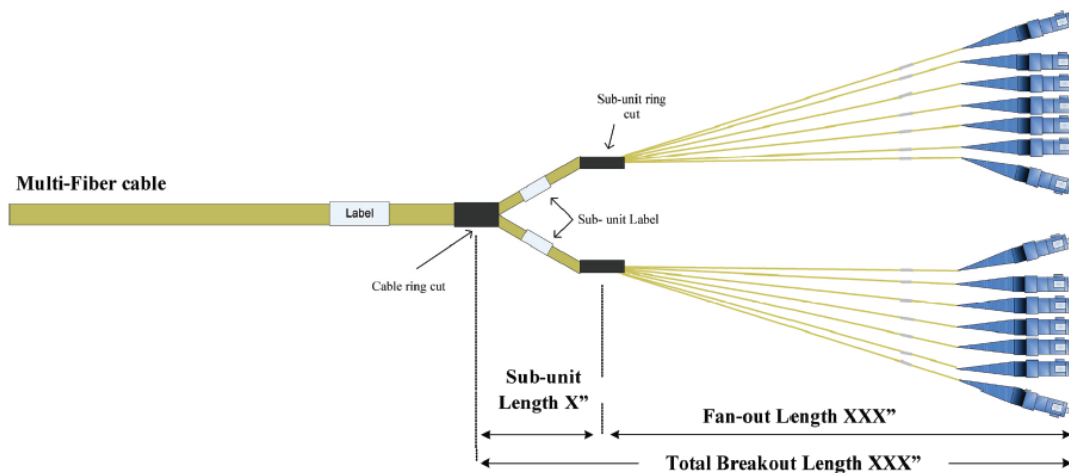
**Multi-Fiber  
Cable Assemblies**

Cablcon produces custom multi-fiber cable assemblies to meet the specific needs of our customers. All cables are domestically built at one of our ISO & TL 9000 Certified manufacturing facilities. We are pleased to offer GR-certified components from industry leading manufacturers, and our processes are designed to meet GR-326-CORE Issue 4 and GR-409-CORE End Face Geometry parameters, as well as IEC-61300-3-35 for End Face Cleanliness.

Regardless of your application, Cablcon multi-fiber cable assemblies provide for a safe, cost effective installation, eliminating the need for field termination. Our guaranteed assemblies are built and tested to ensure they meet/exceed all EIA/TIA and Telcordia requirements.

**AVAILABLE IN:**

- Outside plant, Indoor/Outdoor, Riser, Plenum
- Armored, non-armored
- Single mode 9/125, Multimode 62.5/125, 50/125, 50/125 Laser Optimized OM3 & OM4
- LC, SC, FC, ST, MTP/MPO (LC and SC available in simplex or duplex)
- PC, UPC, APC
- Trunk pigtail applications, fiber array
- 2 fibers to 432 fibers
- Distribution, Breakout and Ribbon Style
- Furcation is available with 900um, 1.6mm, 2.0mm and 3.0mm Fan-out tubing
- 100% tested to GR-326-CORE Issue 4 for insertion and return loss and IEC-61300-3-35 for End Face Cleanliness
- Electronic test results are available online at *fibertest.cablcon.com* for each order and are archived at Cablcon for warranty purposes



Contact our Inside Sales Team for standard & custom breakout lengths and part numbers.



**DALLAS • DETROIT**

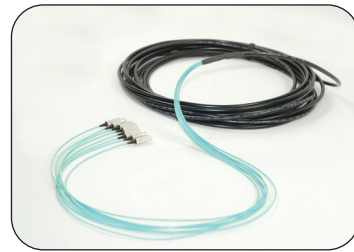
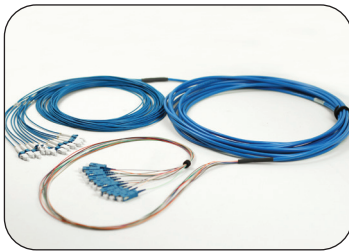
Corporate Offices: 359 Robbins Drive • Troy, MI 48083  
 Phone: 888.8.CABLCON • Fax: 248.588.1462 • [www.cablcon.com](http://www.cablcon.com)





**Multi-Fiber  
Cable Assemblies**

Connector Type	Core	Wavelength nm	Bi-directional IL (dB) per connector	Unidirectional IL (dB) per fiber	Reflectance (dB)
Single mode single fiber	8.3 um UPC	1310/1550	0.3	0.6	<-50
	8.3 um APC	1310/1550	0.3	0.6	<-65
Multimode single fiber	50 um	850/1300	0.3	0.6	<-30
	62.5 um	850/1300	0.3	0.6	<-30
Single mode MT/APC	8.3 um	1310	0.5	1	<-60
		1550	0.5	1	
Multimode MT	50 um	850	0.5	1	<-30
		1300	0.5	1	
Multimode MT	62.5 um	850	0.5	1	<-30
		1300	0.5	1	



**DALLAS • DETROIT**

Corporate Offices: 359 Robbins Drive • Troy, MI 48083

Phone: 888.8.CABLCON • Fax: 248.588.1462 • [www.cablcon.com](http://www.cablcon.com)

