

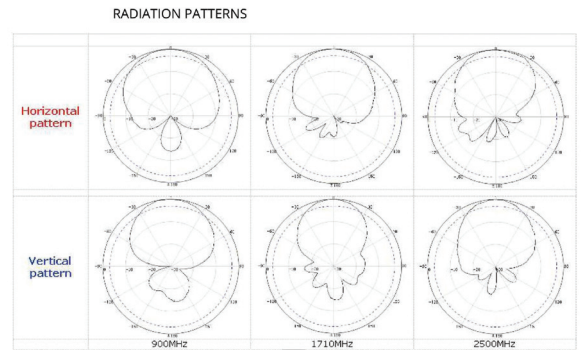
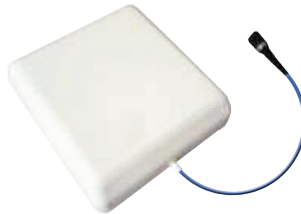


Cablcon is pleased to offer CORE™ DAS antennas. CORE™ DAS antennas enable LTE 4G operators to support trends such as the dramatic increase in data, photos and videos that consumers upload to social networking sites. CORE™ Antennas deliver better coverage, increased data throughput, and a stronger, more stable connection.

LOW PIM LTE DAS SISO INDOOR PANEL ANTENNA: 698-960/1710-2700MHZ

PIM Rated -153 dBc

Description	Part Number
PIM Rated Vertically Polarized Indoor Panel SISO Antenna	VGLTESPANEL170110



 **iBwave** Coming Soon in iBwave Designer Version 6.0 and higher

Specifications		
Frequency Range:	698-960 MHz	1710-2700 MHz
Gain:	5±0.5	8.0±0
Polarization:	Vertical	
Beam Width - Horizontal:	80°	65°
Vertical:	73°	60°
Front-To-Back Ratio:	>12dB	>18dB
VSWR	≤1.8	
PIM / Carrier (2 x 43 dBm):	≤ -153 dBc	
Input Power Per Port, Maximum :	50 Watts	
Impedance:	50 Ohm	
Dimensions:	6.5" x 6.1" x 2"	
Weight:	0.55 lb.	
Radome Material and Color:	ABS, White, RAL7035	
Mounting Type:	Wall Mount	
Connector Type And Location:	N Female	
Operational Temperature :	- 67° to + 140°	
Operational Humidity:	< 95%	
Shipping Dimensions, HxWxD:	7.48" x 6.49" x 2.16"	
Shipping Weight:	0.88 lb.	

CORE™ ANTENNAS ARE A TRADEMARK OF THE VENTI GROUP, LLC.

DALLAS • DETROIT

Corporate Offices: 359 Robbins Drive • Troy, MI 48083-4561
Phone: 888.8.CABLCON • Fax: 248.588.1462 • www.cablcon.com





CORE™
DAS ANTENNAS

Cablcon is pleased to offer CORE™ DAS antennas. CORE™ DAS antennas enable LTE 4G operators to support trends such as the dramatic increase in data, photos and videos that consumers upload to social networking sites. CORE™ Antennas deliver better coverage, increased data throughput, and a stronger, more stable connection.

CORE™ DAS X-POL PANEL ANTENNA FOR LTE: 698-960, 1710-2700 MHZ

PIM Rated -153 dBc (2 x 20W)

Description	Part Number
PIM Rated X-POL Indoor Panel MIMO Antenna	VGLTEPNL158025



 **iBwave** (Available in iBwave Designer Version 6.0 and higher)

Specifications			
Frequency Range:	698-806 MHz	806-960 MHz	1710-2700 MHz
Gain:	6.5 dBi	7.0 dBi	7.5 dBi
Polarization:	±45°	±45°	±45°
Beam Width - Horizontal:	78 deg	73 deg	73 deg
Vertical:	68 deg	60 deg	65 deg
Front-To-Back Ratio:	15 dB	15 dB	25 dB
VSWR (typical): 1	.8:1	1.8:1	1.8:1
Isolation:	>20 dB	>20 dB	>23 dB
PIM, Carrier (2 x 43dBm, 20 W): -	153 dBc	-153 dBc	-153 dBc
Input Power Per Port, Maximum :	100 Watts	100 Watts	100 Watts
Impedance:	50 Ohm	50 Ohm	50 Ohm
Dimensions:	305 mm H x 186 mm W x 63 mm D (12.0 in x 7.3 in x 2.4 in)		
Weight, Without Mounting Kit:	0.7 kg (1.5 lb.)		
Radome Material And Color:	ABS, White, RAL7035		
Mounting Type:	Wall Mount		
Connector Type And Location:	N-Female x 2		
Operational Temperature :	- 55 to + 60 Celsius		
Operational Humidity:	< 95 %		
Shipping Dimensions:	360 mm H x 210 mm W x 90 mm D (14.2 in x 8.3 in x 3.5 in)		
Shipping Weight:	0.7 kg (1.5 lb.)		

CORE™ ANTENNAS ARE A TRADEMARK OF THE VENTI GROUP, LLC.

DALLAS • DETROIT

Corporate Offices: 359 Robbins Drive • Troy, MI 48083-4561
Phone: 888.8.CABLCON • Fax: 248.588.1462 • www.cablcon.com

